

ZW-7 series

HITACHI

Reliable Solutions

ZW140/160



WHEEL LOADER

Model code : ZW140-7

Engine maximum power : 115 kW / 154 HP

Operating weight : 11 790 – 12 100 kg

Bucket capacity : 1.6 – 2.3 m³

Model code : ZW160-7 / ZW160PL-7

Engine maximum power : 126 kW / 169 HP

Operating weight : 12 880 – 13 560 kg

Bucket capacity : 2.0 – 2.5 m³



YOU'RE IN CONTROL

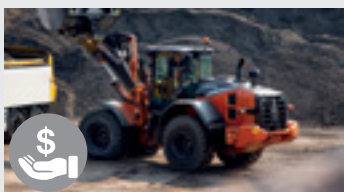
You're at the heart of Hitachi's design for its latest range of wheel loaders. To continuously improve on previous generation machines, we've focused on enhancing your experience in the cab as an operator.

We've considered the challenges you face as the owner of a successful business. And we've zoomed in on the ways in which we can support you over the life cycle of your machine.

By putting you at the heart of the ZW-7 range, we invite you to take control – over your workspace and your fleet. And by working in partnership, we will help you to create your vision.



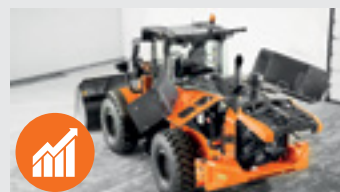
INSIDE



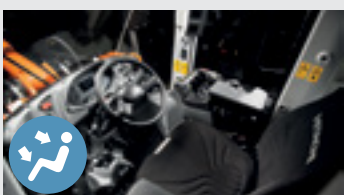
4. Complete Control
In control of your assets



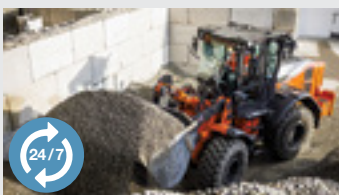
6. Increase your safety
Be in control of your environment



8. Boost your uptime
Improve your profit



13. Control Zone
Feel the difference



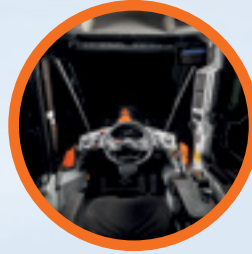
16. Manage your machine
In control of your performance



22. Specifications
Know your machine

COMPLETE CONTROL

The new ZW-7 range of wheel loaders puts you firmly in control, so you can feel assured of your machine's performance, and supported by the technological expertise and services that Hitachi provides.



The cab interior provides a comfortable working environment.



Approach speed control maximises fuel efficiency on loading operations.



The payload checker helps you work more productively and accurately when loading trucks.



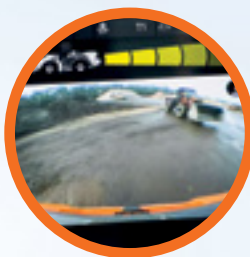
ConSite Pocket app allows you to manage and monitor your fleet remotely.



Options such as Hitachi ground engaging tools enable you to enhance the performance of your wheel loader.



Integrated console and seat suspension gives a greater sense of control and seat-mounted electric control levers reduce fatigue.



Visibility of the job site is excellent thanks to the Aerial Angle® camera system and new LCD monitor.



Safety is enhanced by the rear obstacle detection and warning system.



The ECO gauge on the monitor indicates how to lower fuel consumption and reduce costs.



Maintenance is quick and easy due to improved access to components and anti-clogging radiators.



Higher engine output at lower engine RPM increases performance.



INCREASE YOUR SAFETY

Your ability to work safely is vital, not only for your own wellbeing, but also for the successful completion of any project. To protect yourself and your machine from potential hazards, the new Hitachi ZW-7 wheel loaders give you a superior view of your surroundings, so you can see the job site from all angles.

The visibility you enjoy from the cab includes an exceptional 270-degree bird's-eye view with the Aerial Angle® camera system. You can choose from two image options to view the machine's immediate environment, which enables you to control your own safety – as well as that of those around you.

The rear obstacle detection system also enhances safety on the job site, with real-time speed, machine position status and large detection zone.

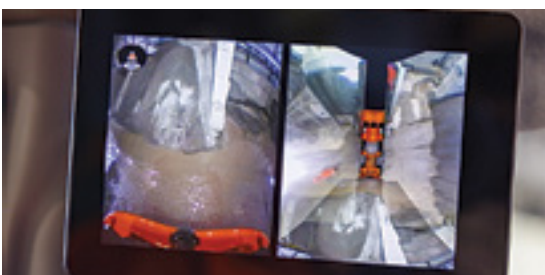
To help you to work more confidently and efficiently, even in the most challenging of conditions, ZW-7 wheel loaders are fitted with some impressive new features. From the LED work lights and roller sunshade, you'll have the visibility you need when it matters most.



Electrically adjusted mirrors provide a clear rear view.



Rear obstacle detection system enhances safety on the job site.



Choose between different image layouts to suit your working environment.



LED work lights improve visibility in challenging conditions.

BOOST YOUR UPTIME

Completing a project on time and on budget depends on the ability of your construction equipment to perform all day, every day. That's why Hitachi owners have profited from generations of ultra-reliable and durable machinery – and the ZW-7 range is no exception.

The latest Hitachi wheel loaders have been built to last, so that you can remain in complete control of your assets. They have been tested rigorously and continuously at dedicated facilities in Japan with the goal of significantly boosting your uptime.

As a result, several unique durability-enhancing components have been fitted to the latest Stage-V compliant machines. The intelligent fan operation system prevents radiators from clogging by adjusting the periodic intervals of the automatic reversible fan electronically. Potential damage of major components is reduced by having over 60 guidance and warning messages to inform you about the machine's operational condition.

Downtime is minimised by the priority given to easy maintenance features, such as the improved cooling package and anti-clogging radiators as standard, which save you time and money.



Daily inspection reminders make life easier for operators.



Easy maintenance features minimise downtime.



Intelligent fan operation system prevents radiators clogging.



Engine cover enables convenient access for daily inspections.



Hitachi wheel loaders are tested rigorously to ensure high levels of durability.



IMPROVE YOUR PROFIT

The success of your business depends on the reliability and efficiency of your construction machinery. With Hitachi's latest ZW-7 wheel loaders, you can count on the highest quality, the ultimate in operating comfort and reduced running costs – all of which will have a positive impact on your bottom line.

You can look forward to increasing your profits thanks to the impressive fuel economy and efficient operation of these Stage-V compliant machines. The new ZW160-7 achieves higher levels of productivity than the smaller ZW150-5B, while maintaining the same level of fuel consumption. Further reductions in fuel consumption and greater efficiency come from features such as approach speed control. This allows operators to control the travelling speed on short loading operations, which reduces fuel consumption by 4%.

Another way for your operators to control fuel efficiency – and reduce costs – is by using the all-new ECO gauge. This is clearly visible on the multifunctional colour LCD 8" monitor.

Your operators can also work more productively and accurately thanks to the auto leveller and payload monitoring system. This enables them to keep track of load weights in real time on the monitor and find out how much material is in the bucket or truck. The display shows when the bucket or truck is overloaded, so you can adjust the final load to achieve target capacity.

Braking performance is improved by the retarder control, and the traction control system prevents slippage, reducing fuel consumption, preventing tyre wear, and contributing to lower running costs.

In addition, you can boost your profits by working on a wide range of applications, with three types of lift arms available: standard, high and parallel.



Work more productively and accurately using the payload checker.



The ECO gauge helps to deliver better fuel consumption.



Approach speed control maximises efficiency.



9

8

7

6

1

2

3

5

4

15

14

16

17

13

12

11

10

CONTROL ZONE

Enhanced comfort and safety features are at your fingertips in the refined cab of ZW-7 wheel loaders, giving you the power to perform productively, with ease and reduced fatigue.

- ① **Seat-mounted electric control levers** help to reduce fatigue.
- ② **Multifunction or finger-type control lever** options to suit your preference.
- ③ **Integrated console and seat suspension** gives a greater sense of control.
- ④ **USB power supply and smartphone holder** helps you stay connected.
- ⑤ **Armrest-Integrated sub monitor controller** provides fast access to main functions.
- ⑥ **Ergonomically designed adjustable armrest** so you can work comfortably.
- ⑦ **User-friendly storage space** keeps your workspace tidy and clutter-free.
- ⑧ **Heated heavy duty seat** with horizontal suspension.
- ⑨ **Drinks holder** is easy to detach for cleaning.
- ⑩ **Joystick Steering System** (optional) provides exceptional control.
- ⑪ **Anti-slip steering wheel** for effortless operation.
- ⑫ **3.5" colour liquid crystal display** in the front dashboard is easy to view.
- ⑬ **Spacious cab** gives you a pleasant working environment.
- ⑭ **Panel switch integrated functions** are user-friendly.
- ⑮ **Electrically adjusted mirrors switch** is easy to use.
- ⑯ **High-resolution 8" monitor** is easy to use and navigate.
- ⑰ **Bluetooth®** for hands-free calls and DAB+ radio for music while you work. Audio is easily controlled.



Operation is easy with ergonomically designed controls and switches.



All commonly used functions can be selected at a glance using the side panel switch.



Hitachi's redesigned, state-of-the-art ZW-7 cab gives you the perfect working environment. The ultra-spacious ZW140/160-7 offers you an industry-leading, first-class cab with the ultimate in comfort and quality, as well as some of the lowest noise and vibration levels in the market.

Feel the difference with the synchronised motion of the seat and console, and seat-mounted electric control levers, which have been designed to ensure you feel less tired at the end of the working day.

Easy operation comes with the ergonomic design of the multifunction lever, the anti-slip steering wheel and the 40% larger fully adjustable armrest with integrated controller. You can navigate quickly through the menu on the 8" LCD monitor with the multifunctional controller. The hi-res screen is also easier to view, and the refreshed layout offers a clear display and desirable functionality.

With more storage for your personal belongings, such as your coat, smartphone and drink, you'll feel instantly relaxed and ready for your shift. Practical functions of the joysticks, such as payload checker control and horn, will make your working day effortless and enjoy



You're in control with a spacious, tidy and enjoyable working environment.



The LCD monitor is easy to view with hi-res screen.



Ergonomically placed sub monitor controller provides easy access.



The cab has ample space for your belongings.

MANAGE YOUR MACHINE

Hitachi offers a wide range of after-sales services to help you feel in total control of your fleet and workload. These initiatives give you access to vital data and tools to manage your machine.

Remote monitoring systems Owner's Site and ConSite send operational data daily via GPRS or satellite from your wheel loader to www.globaleservice.com. This includes: ratios of operating hours to enhance efficiency; fuel consumption to manage running costs; and machine location for planning purposes. ConSite summarises the information in a monthly email.

The ConSite Pocket App sends you real-time alerts for issues arising with your machine. You'll receive recommendations on what to do and step-by-step help guides. The app also enables you to see the location of your fleet.



The alerts on the ConSite Pocket App provide real-time information.



A wide range of data on Global e-Service enhances efficiency.



Monitoring the performance of your wheel loader ensures exceptional reliability.



Hitachi offers a wide range of after-sales services for planning maintenance and managing running costs.



Minimise downtime with Hitachi Genuine Parts.



Extended warranties and service contracts provide optimal performance.



PROTECT YOUR INVESTMENT

If your machine will be working in severe conditions, or you want to minimise repair costs, you can take advantage of a unique extended warranty programme and comprehensive service contracts. These can help to optimise performance, reduce downtime and ensure a higher resale value.

We apply the same technological expertise to our wide range of high-quality parts as we do our machines. As a result, you can minimise unscheduled downtime and ensure maximum availability.

The parts range includes Hitachi Genuine Parts, Performance Parts and filters. We also offer robust ground engaging tools and high-quality buckets, which have been manufactured to the same exacting standards.





IN CONTROL OF YOUR WORLD



EH dump trucks and EX ultra-large excavators



Special application excavators



With extensive expertise in designing and manufacturing wheel loaders, as well as a 50-year heritage in producing hydraulic excavators and a reputation as the industry's leading mining machine manufacturer, the Hitachi network will give you access to a range of exceptional construction equipment.

Like the new ZW-7 wheel loaders, Hitachi excavators, rigid dump trucks, and special application machines incorporate advanced technology and pioneering expertise. This is inspired by parent company Hitachi Ltd, which was founded on the philosophy to make a positive contribution to society through technology.

In addition to the latest products made at state-of-the-art facilities and built to the highest quality standards, you'll have the support of our experienced engineers and dedicated dealer personnel. You'll also benefit from market-leading services and initiatives, such as Premium Used, which have been created to enhance your experience as a Hitachi customer.

Whatever vision you wish to create, Hitachi has the product, people, solutions and services you need to make it become a reality – and empower you to take control of your world.



Zaxis medium excavators

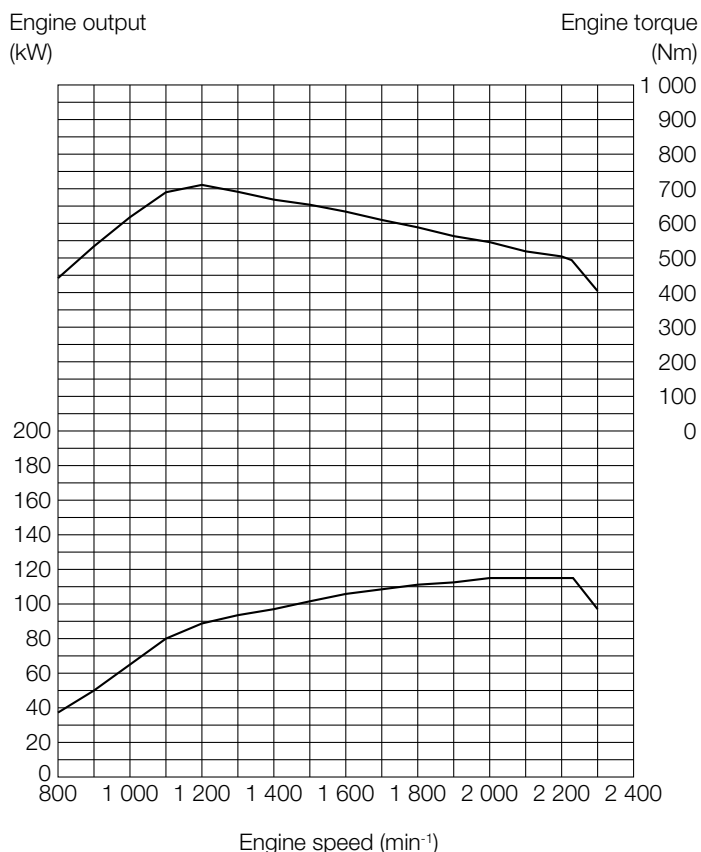


Zaxis mini excavators

SPECIFICATIONS

ZW140-7

ENGINE	
Model	CUMMINS B4.5
Type	4 cycle water-cooled, direct injection
Aspiration	Turbocharger and intercooled
Aftertreatment	DPF and SCR system
No. of cylinders	4
Maximum power	
ECE R120 gross	115 kW (154 HP) at 2 200 min ⁻¹ (rpm)
ISO 9249 : 2007 net	114 kW (153 HP) at 2 200 min ⁻¹ (rpm)
Rated power	
ISO 14396 : 2002 gross	115 kW (154 HP) at 2 200 min ⁻¹ (rpm)
ISO 9249 : 2007 net	114 kW (153 HP) at 2 200 min ⁻¹ (rpm)
Maximum torque	
ISO 9249 : 2007 net.....	704 Nm at 1 200 min ⁻¹ (rpm)
gross	712 Nm at 1 200 min ⁻¹ (rpm)
Bore and stroke	107 mm X 124 mm
Piston displacement	4.46 L
Batteries	2 x 12 V
Air cleaner	Two element dry type with restriction indicator



POWER TRAIN	
Transmission	Electrical-controlled 2 motor hydrostatic transmission with summation gear box, Gear box : Fixed gear ratio, powershift countershaft type
Cooling method	Forced circulation type
Travel speed* Forward / Reverse	
1st	13 / 13 km/h (13 / 13 km/h)
2nd	13 / 13 km/h (13 / 13 km/h)
3rd	20 / 20 km/h (20 / 20 km/h)
4th	39 / 39 km/h (39 / 39 km/h)
*With 20.5R25 (L3) tires () : Data at Power Mode	

AXLE AND FINAL DRIVE	
Drive system	Four-wheel drive system
Front and rear axle	Semi-floating
Front	Fixed to the front frame
Rear	Trunnion support
Reduction and differential gear	Two stage reduction with torque proportioning differential
Oscillation angle	Total 20° (+10°, -10°)
Final drives	Heavy-duty planetary, mounted inboard

TIRES	
Tire size	20.5R25 (L3)

BRAKES	
Service brakes	Inboard mounted fully hydraulic 4 wheel wet disc brakes. Front & rear independent brake circuit, HST (Hydro Static Transmission) system provides additional hydraulic braking capacity
Parking brakes	Spring applied, hydraulically released, wet disc type

STEERING SYSTEM	
Type	Articulated frame steering
Steering angle	Each direction 40°; total 80°
Cylinders	Double-acting piston type
No. x Bore x Stroke	2 x 65 mm x 419 mm

HYDRAULIC SYSTEM

Arm and bucket are controlled by multifunction lever

Arm controls	Four position valve; Raise, hold, lower, float
--------------	--

Bucket controls with automatic bucket return-to-dig control

Three position valve; Roll back, hold, dump

Main pump (Serve as steering pump)

Gear type

Maximum flow	194 L/min at 2 200 min ⁻¹ (rpm)
--------------	--

Maximum pressure	20.6 MPa
------------------	----------

Brake & fan & pilot oil pump

Gear type

Maximum flow	44.9 L/min at 2 200 min ⁻¹ (rpm)
--------------	---

Maximum pressure	15.5 MPa
------------------	----------

Hydraulic cylinders

Type	Double acting type
------	--------------------

No. x Bore x Stroke	Arm: 2 x 125 mm x 620 mm
---------------------	--------------------------

	Bucket: 1 x 150 mm x 445 mm
--	-----------------------------

Filters	Full-flow 10 micron return filter in reservoir
---------	--

Hydraulic cycle times	ZW140-7
-----------------------	---------

Lift arm raise	4.9 s
----------------	-------

Lift arm lower	3.1 s
----------------	-------

Bucket dump	1.2 s
-------------	-------

Total	9.2 s
-------	-------

*Data at Power Mode

ENVIRONMENT

Engine Emissions

Complies with EU stage V

Sound level

External sound level according to ISO 6395 : 2008 and EU Directive 2000/14/EC	103 LwA dB(A)
---	---------------

Sound level in cabin according to ISO 6396: 2008	66 LpA dB(A)
--	--------------

Air Conditioning System

The air conditioning system contains fluorinated greenhouse gases.

Refrigerant type: HFC-134a, GWP: 1430, Amount: 0.75±0.05 kg, CO₂e: 1.07±0.07 ton.

SERVICE REFILL CAPACITIES

Fuel tank	205 L
-----------	-------

Engine coolant	20 L
----------------	------

Engine oil (Including oil pan)	16 L
--------------------------------	------

Front axle differential and wheel hubs	24 L
--	------

Rear axle differential and wheel hubs	25 L
---------------------------------------	------

Hydraulic oil tank	80 L
--------------------	------

DEF/AdBlue® tank	25 L
------------------	------

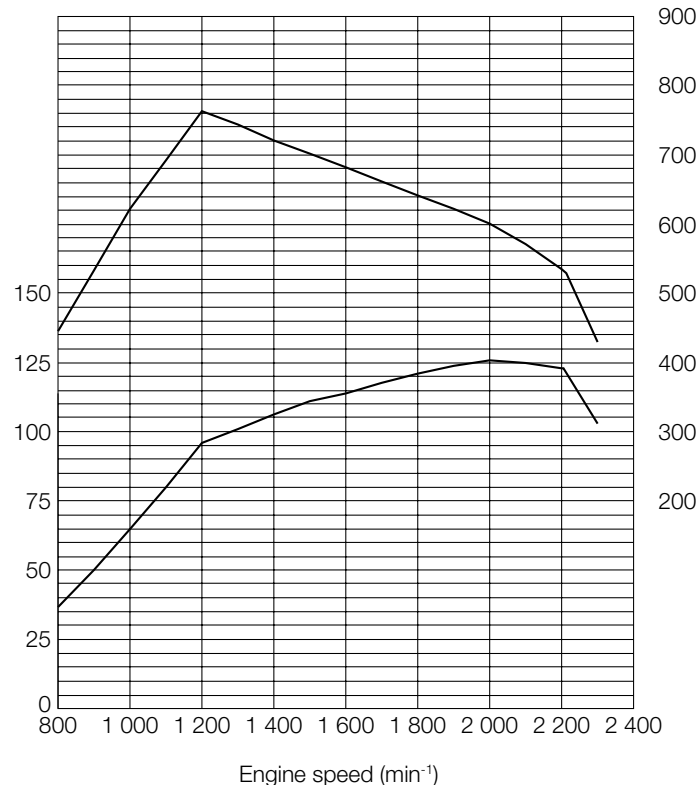
SPECIFICATIONS

ZW160-7

ENGINE	
Model	CUMMINS B4.5
Type	4 cycle water-cooled, direct injection
Aspiration	Turbocharger and intercooled
Aftertreatment	DPF and SCR system
No. of cylinders	4
Maximum power	
ECE R120 gross	126 kW (169 hp) at 2 000 min ⁻¹ (rpm)
ISO 9249 : 2007 net	124 kW (166 hp) at 2 000 min ⁻¹ (rpm)
Rated power	
ISO 14396 : 2002 gross	123 kW (165 hp) at 2 200 min ⁻¹ (rpm)
ISO 9249 : 2007 net	122 kW (163 hp) at 2 200 min ⁻¹ (rpm)
Maximum torque	
ISO 9249 : 2007 net	755 Nm at 1 200 min ⁻¹ (rpm)
gross	763 Nm at 1 200 min ⁻¹ (rpm)
Bore and stroke	107 mm X 124 mm
Piston displacement	4.46 L
Batteries	2 x 12 V
Air cleaner	Two element dry type with restriction indicator

Engine output
(kW)

Engine torque
(Nm)



POWER TRAIN	
Transmission	Electrical-controlled 2 motor hydrostatic transmission with summation gear box, Gear box : Fixed gear ratio, powershift countershaft type
Cooling method	Forced circulation type
Travel speed* Forward / Reverse	
1st	13 / 13 km/h (13 / 13 km/h)
2nd	13 / 13 km/h (13 / 13 km/h)
3rd	20 / 20 km/h (20 / 20 km/h)
4th	39 / 39 km/h (39 / 39 km/h)
*With 20.5R25 (L3) tires () : Data at Power Mode	

AXLE AND FINAL DRIVE	
Drive system	Four-wheel drive system
Front and rear axle	Semi-floating
Front	Fixed to the front frame
Rear	Trunnion support
Reduction and differential gear	Two stage reduction with torque proportioning differential
Oscillation angle	Total 20° (+10°, -10°)
Final drives	Heavy-duty planetary, mounted inboard

TIRES	
Tire size	20.5R25 (L3)

BRAKES	
Service brakes	Inboard mounted fully hydraulic 4 wheel wet disc brakes. Front & rear independent brake circuit, HST (Hydro Static Transmission) system provides additional hydraulic braking capacity
Parking brakes	Spring applied, hydraulically released, wet disc type

STEERING SYSTEM	
Type	Articulated frame steering
Steering angle	Each direction 40°; total 80°
Cylinders	Double-acting piston type
No. x Bore x Stroke	2 x 65 mm x 419 mm

HYDRAULIC SYSTEM

Arm and bucket are controlled by multifunction lever

Arm controls Four position valve; Raise, hold, lower, float

Bucket controls with automatic bucket return-to-dig control

Three position valve; Roll back, hold, dump

Main pump (Serve as steering pump)

Gear type

Maximum flow 194 L/min at 2 200 min⁻¹ (rpm)

Maximum pressure 20.6 MPa

Brake & fan & pilot oil pump

Gear type

Maximum flow 44.9 L/min at 2 200 min⁻¹ (rpm)

Maximum pressure 15.5 MPa

ZW160-7 Hydraulic cylinders

Type Double acting type

No. x Bore x Stroke Arm: 2 x 125 mm x 760 mm

Bucket: 1 x 150 mm x 495 mm

Filters Full-flow 10 micron return filter in reservoir

ZW160PL-7 Hydraulic cylinders

Type Double acting type

No. x Bore x Stroke Arm: 2 x 125 mm x 760 mm

Bucket: 2 x 110 mm x 1 005 mm

Filters Full-flow 10 micron return filter in reservoir

Hydraulic cycle times ZW160-7 ZW160PL-7

Lift arm raise 5.9 s 6.2 s

Lift arm lower 3.8 s 3.6 s

Bucket dump 1.4 s 3.4 s

Total 11.1 s 13.2 s

*Data at Power Mode

ENVIRONMENT

Engine Emissions

Complies with EU stage V

Sound level

External sound level according to ISO 6395 : 2008 and EU Directive 2000/14/EC 104 LwA dB(A)

Sound level in cabin according to ISO 6396: 2008 67 LpA dB(A)

Air Conditioning System

The air conditioning system contains fluorinated greenhouse gases.

Refrigerant type: HFC-134a, GWP: 1430, Amount: 0.75±0.05 kg, CO₂e: 1.07±0.07 ton.

SERVICE REFILL CAPACITIES

Fuel tank 205 L

Engine coolant 20 L

Engine oil (Including oil pan) 16 L

Front axle differential and wheel hubs 27 L

Rear axle differential and wheel hubs 27 L

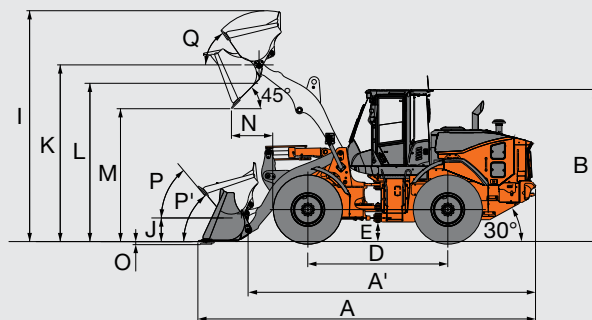
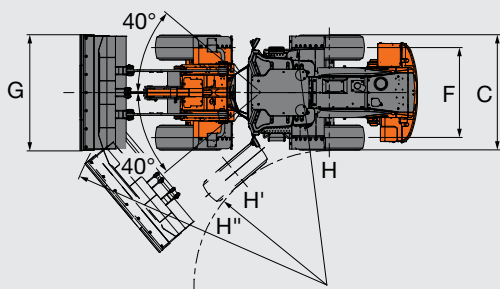
Hydraulic oil tank 80 L

DEF/AdBlue® tank 25 L

SPECIFICATIONS

ZW140-7

DIMENSIONS AND SPECIFICATIONS



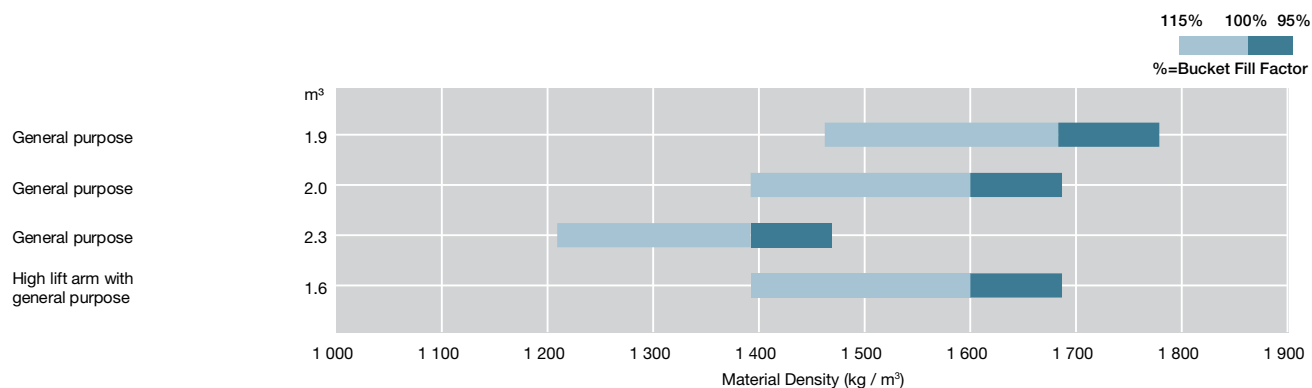
Bucket type			Standard arm		High-lift arm	
			General purpose			
			Bolt-on cutting edge		Bolt-on teeth	Bolt-on cutting edge
Bucket capacity	ISO 7546 : 1983 Heaped	m³	2.0	2.3	1.9	1.6
	ISO 7546: 1983 Struck	m³	1.6	1.9	1.6	1.3
A	Overall Rength.....mm		7 220	7 315	7 350	7 555
A'	Overall Rength (without bucket)mm		6 235			6 700
B	Overall Height (up to cab top)mm		3 275			
C	Width over tiresmm		2 470			
D	Wheel basemm		3 000			
E	Ground clearancemm		425			
F	Tread.....mm		1 930			
G	Bucket widthmm		2 480			
H	Turning radius (center of out tire)mm		5 085			
H'	Turnig radius (inside of inside tire)mm		2 875			
H''	Turnig radius (outside of bucket at carry)mm		5 860	5 880	5 890	6 005
I	Overall operating height at full heightmm		5 015	5 105	5 015	5 210
J	Height of bucket pin at carry.....mm		535			
K	Height of bucket pin at fully raisedmm		3 800			4 160
L	Liftarm clearance at full heightmm		3 550		3 540	3 910
M	Dumping clearance at 45 degree full heightmm		2 865	2 800	2 775	3 320
N	Reach 45 degree dump full heightmm		890	955	965	950
O	Digging depth.....mm		40		50	130
P	Max. roll back at carrydeg		50			
P'	Max. roll back at grounddeg		42			44
Q	Roll back angle at full heightdeg		55			51
Static tipping load ISO 14397-1: 2007	Straight kg		9 490	9 420	9 620	7 570
	Full 40 degree turn lb		8 240	8 180	8 360	6 550
Breakout force kN		98	89	106	115
kgf		9 990	9 050	10 790	11 770
Operating weight * (With ROPS / FOPS Cab)..... kg			11 840	11 890	11 790	12 100

: Static tipping load and operating weight marked with include 20.5 R25 (L3) tires (No ballast) with lubricants, full fuel tank and operator.
Machine stability and operating weight depend on counterweight, tire size and other attachments.

WEIGHT CHANGE

Option item		Operating weight (kg)	Tipping load (kg)		Overall width (mm) (outside tire)	Overall height (mm)	Overall length (mm)
			Straight	Full turn			
Tire	20.5R25 (L3) VJTZ	±0	±0	±0	±0	±0	±0
	20.5R25 (L3) XHA2	-10	-10	-10	±0	+5	-5
Belly guard		+70	+40	+40	-	-	-

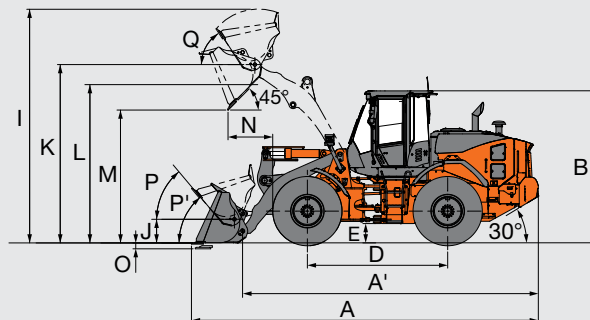
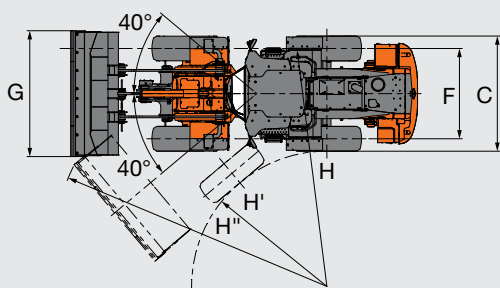
BUCKET SELECTION GUIDE



SPECIFICATIONS

ZW160-7

DIMENSIONS AND SPECIFICATIONS



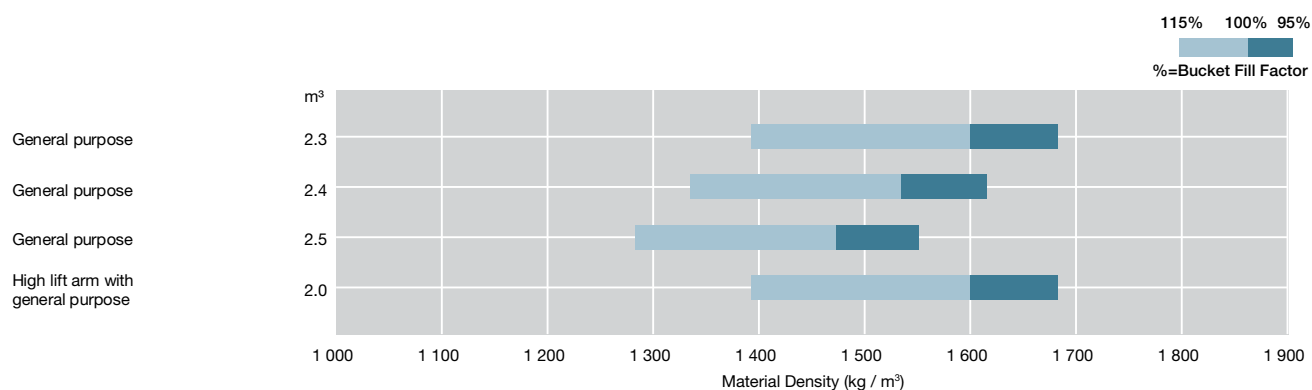
Bucket type			Standard arm		High-lift arm	
			General purpose			
			Bolt-on cutting edge		Bolt-on teeth	Bolt-on cutting edge
Bucket capacity	ISO 7546 : 1983 Heaped	m³	2.3	2.5	2.4	2.0
	ISO 7546: 1983 Struck	m³	1.9	2.1	2.0	1.7
A Overall Lengthmm			7 425		7 605	7 820
A' Overall Length (without bucket)mm			6 420			6 905
B Overall Height (up to cab top)mm			3 275			
C Width over tiresmm			2 480			
D Wheel basemm			3 000			
E Ground clearancemm			425			
F Tread.....mm			1 930			
G Bucket widthmm			2 690			
H Turning radius (center of out tire)mm			5 085			
H' Turnig radius (inside of inside tire)mm			2 870			
H'' Turnig radius (outside of bucket at carry)mm			6 010	6 025	6 060	6 185
I Overall operating height at full heightmm			5 050	5 110		5 320
J Height of bucket pin at carry.....mm			580			
K Height of bucket pin at fully raisedmm			3 835			4 205
L Liftarm clearance at full heightmm			3 555		3 540	3 925
M Dumping clearance at 45 degree full heightmm			2 860	2 825	2 730	3 295
N Reach 45 degree dump full heightmm			960	995	1 070	1 080
O Digging depth.....mm			100		110	220
P Max. roll back at carrydeg			51			
P' Max. roll back at grounddeg			43			45
Q Roll back angle at full heightdeg			59			54
Static tipping load	Straight	kg	10 780	10 740	10 890	8 620
ISO 14397-1: 2007	Full 40 degree turn	lb	9 360	9 320	9 460	7 450
Breakout force	kN	109	103	110	112
	kgf	11 090	10 470	11 240	11 420
Operating weight * (With ROPS / FOPS Cab)..... kg			12 910	12 930	12 880	13 070

: Static tipping load and operating weight marked with include 20.5 R25 (L3) tires (No ballast) with lubricants, full fuel tank and operator.
Machine stability and operating weight depend on counterweight, tire size and other attachments.

WEIGHT CHANGE

Option item		Operating weight (kg)	Tipping load (kg)		Overall width (mm) (outside tire)	Overall height (mm)	Overall length (mm)
			Straight	Full turn			
Tire	20.5R25 (L3) VJTZ	±0	±0	±0	±0	±0	±0
	20.5R25 (L3) XHA2	-10	-10	-10	±0	+5	-5
Belly guard		+70	+40	+40	-	-	-

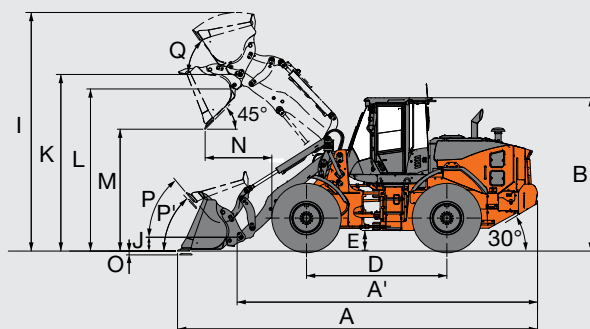
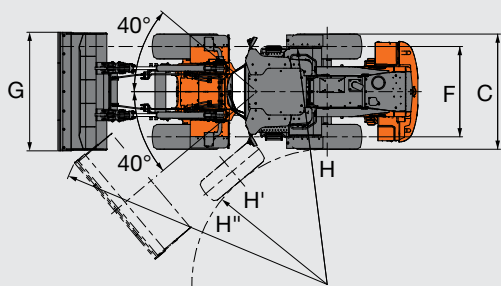
BUCKET SELECTION GUIDE



SPECIFICATIONS

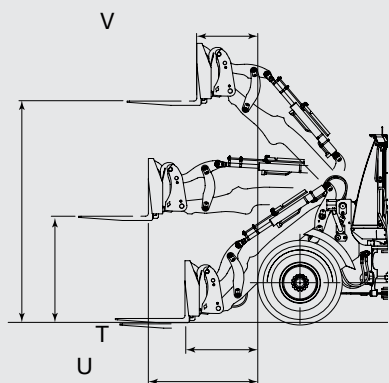
ZW160PL-7

DIMENSIONS AND SPECIFICATIONS



Bucket type			General purpose	
			Bolt-on cutting edge	Weld-on teeth
Bucket capacity	ISO 7546 : 1983 Heaped	m ³	2.1	2.0
	ISO 7546: 1983 Struck	m ³	1.7	1.7
A Overall Length			7 700	7 865
A' Overall Length (without bucket)			6 565	
B Overall Height (up to cab top)			3 275	
C Width over tires			2 480	
D Wheel base			3 000	
E Ground clearance			425	
F Tread.....			1 930	
G Bucket width			2 535	
H Turning radius (centre of out tire)			5 085	
H' Turning radius (inside of inside tire)			2 870	
H'' Turning radius (outside of bucket at carry)			5 990	6 035
I Overall operating height at full height			5 285	
J Height of bucket pin at carry.....			515	
K Height of bucket pin at fully raised			3 970	
L Liftarm clearance at full height			3 675	3 690
M Dumping clearance at 45 degree full height			2 800	2 685
N Reach 45 degree dump full height			1 250	1 385
O Digging depth.....			120	105
P Max. roll back at carry			53	
P' Max. roll back at ground			44	
Q Roll back angle at full height			56	
Static tipping load ISO 14397-1: 2007	Straight	kg	9 180	9 280
	Full 40 degree turn	lb	7 930	8 020
Breakout force	kN	107	108
	kgf	10 900	10 970
Operating weight * (With ROPS / FOPS Cab).....			13 560	13 520

WITH FORK ATTACHMENT



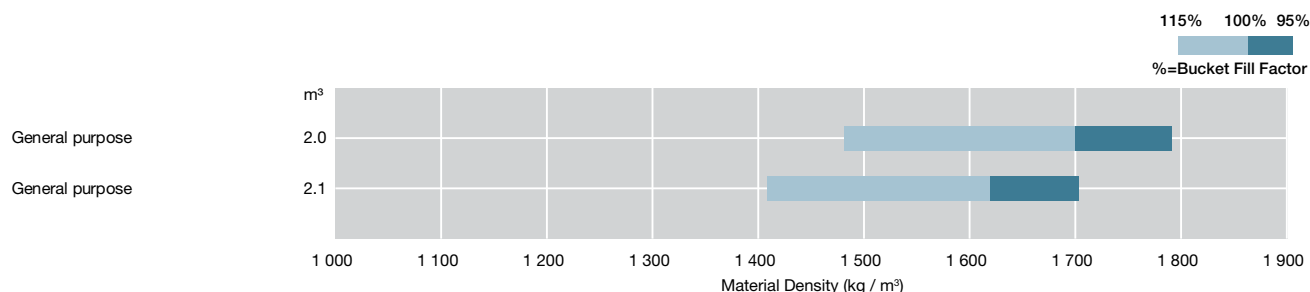
Attachment type		Fork
R	Max. stacking height.....mm	3 745
S	Height of fork at maximum reach.....mm	1 815
T	Reach at ground level.....mm	1 245
U	Max. reach.....mm	1 875
V	Reach at max. stacking height.....mm	1 080
Static tipping load	Straight.....kgf	6 870
	Full 40 degree turnkgf	5 950
Max. payload per EN 474-3, 80 %.....kg		4 760
Max. payload per EN 474-3, 60 %.....kg		3 570
Fork tine length.....mm		1 220
Operating weight *.....kg		13 260

Note: *: Static tipping load and operating weight marked with* include 20.5R25 (L3) tires (No ballast) with lubricants, full fuel tank and operator.
Machine stability and operating weight depend on counterweight, tire size and other attachments.

WEIGHT CHANGE

Option item		Operating weight (kg)	Tipping load (kg)		Overall width (mm) (outside tire)	Overall height (mm)	Overall length (mm)
			Straight	Full turn			
Tire	20.5R25 (L3) VJTZ	±0	±0	±0	±0	±0	±0
	20.5R25 (L3) XHA2	-10	-10	-10	±0	+5	-5
Belly guard		+70	+40	+40	-	-	-

BUCKET SELECTION GUIDE



EQUIPMENTS

● : Standard equipment ○ : Optional equipment

ENGINE	ZW 140-7	ZW 160-7	ZW 160PL-7
Aftertreatment device	●	●	●
Aftertreatment manual regeneration inhibit switch	●	●	●
Aftertreatment manual regeneration switch	●	●	●
Air filter double elements	●	●	●
Air intake			
Pre-cleaner (sy-clone type)	●	●	●
Anti-clogging radiator (wide fin pitch)	●	●	●
Automatic reversible cooling fan with heat sensing	●	●	●
Cartridge-type engine oil filter	●	●	●
Cartridge-type fuel main filter	●	●	●
Cartridge-type fuel pre-filter (with water separator function)	●	●	●
Coolant reservoir sight gauge	●	●	●
DEF/AdBlue® tank with magnet adapter	●	●	●
Engine auto shut-down control system	●	●	●
Engine oil remote drain	●	●	●
Fan guard	●	●	●

BRAKE SYSTEM	ZW 140-7	ZW 160-7	ZW 160PL-7
Front and rear independent brake circuit	●	●	●
Inboard mounted fully hydraulic 4 wheel wet disc	●	●	●
Spring-applied/Hydraulic-released parking brake	●	●	●

HYDRAULIC SYSTEM	ZW 140-7	ZW 160-7	ZW 160PL-7
Bucket auto leveler (automatic return to dig control)	●	●	●
Control lever lock switch	●	●	●
Dual lift arm auto leveler and kickout system	●	●	●
Electric control lever			
for 3 spools control valve			
MF lever and Proportional switch for 3rd function	●	●	●
for 4 spools control valve			
MF lever and 2 Proportional switch for 3rd and 4th function	○	○	—
Hydraulic filters	●	●	●
Lift arm float system	●	●	●
Quick coupler piping and switch	○	○	●
Reservoir sight gauge	●	●	●
Ride control system (OFF-AUTO type)	●	●	●
Work mode selector	●	●	●

CAB	ZW 140-7	ZW 160-7	ZW 160PL-7
Adjustable steering column with POP-UP	●	●	●
Auto control air conditioner			
with double intake filter	●	●	●
Bluetooth® integrated DAB+radio, hands-free calling	●	●	●
Camera and monitor			
AERIAL ANGLE (Side and rear view camera) and monitor	●	●	●
Coat hook	●	●	●
Evacuation hammer	●	●	●
Front/rear defroster	●	●	●
Glove compartment	●	●	●
LED room light	●	●	●
Payload checker with tip-off function	●	●	—
Rear obstacle detection system	●	●	●
Rear obstacle detection system (Automatic speed reduction)	●	●	●
Rear view mirrors			
Inside (1)	●	●	●
Outside (2)	○	○	○
Outside (Heated, 2) electrical adjustment retractable mirror stay	●	●	●
Retractable seat belt, 3 in.	●	●	●
ROPS (ISO 3471:2008), FOPS (ISO 3449:2005 LEVEL II): multi-plane isolation mounted for noise, vibration reduction	●	●	●
Rubber floor mat	●	●	●
Seat			
Heavy duty air suspension seat equipped with horizontal suspension headrest and heater: fabric, high back, adjustable for damper, inclination of the seat, seat depth, weight-height, fore-aft position, reclining angle, armrest angle, headrest height and angle, lumbar support	●	●	●
Seat belt reminder	●	●	●
Steering system			
Wheel steering	●	●	●
Storage			
Cup holder	●	●	●
Document holder	●	●	●
Hot and cool box	●	●	●
Seatback pocket	●	●	●
Smartphone and Tablet device holder	●	●	●
Sunscreen roller type	●	●	●
Textured steering wheel with spinner knob	●	●	●
Tinted safety glass			
Front windshield: laminated	●	●	●
Others: tempered	●	●	●
USB power supply	●	●	●
Windshield washer front and rear	●	●	●
Windshield wipers front and rear	●	●	●
2 speakers	●	●	●
8 inch sub monitor	●	●	●

● : Standard equipment ○ : Optional equipment

MONITORING SYSTEM	ZW 140-7	ZW 160-7	ZW 160PL-7
Gauge: coolant temperature, fuel level, transmission oil temperature	●	●	●
Indicator lights: clearance lights, control lever lock, fuel level, high beam, parking brake, preheat, turn signals, work lights, fan reverse indicator, seat belt indicator	●	●	●
Indicator on multifunction monitor: F-N-R shift position, gear shift position, clock, DEF alarm indicator, DEF level gauge, ECO indicator, forward/reverse selector switch indicator, hold display, hour meter, odometer, battery volt, speedometer, tachometer, transmission auto-shifting indicator, Warning lights: air filter restriction, brake oil low pressure, communication system error, discharge warning, engine oil low pressure, engine warning, hydraulic oil level, low steering oil pressure, overheat, transmission warning	●	●	●
Indicator on sub monitor: payload checker (excluding PL), dual auto-leveler indicator rear obstacle detection and warning system (optional)	●	●	●
38 languages selection	●	●	●

ELECTRICAL SYSTEM	ZW 140-7	ZW 160-7	ZW 160PL-7
Alternator (95 A)	●	●	●
Backup alarm	●	●	●
Battery disconnect switch	●	●	●
Large capacity batteries	●	●	●
Power outlet 12 V and 24 V	●	●	●

LIGHTS	ZW 140-7	ZW 160-7	ZW 160PL-7
Clearance lights	●	●	●
LED brake and tail lights	●	●	●
LED headlights	●	●	●
Rotating lamp	●	●	●
Turn signals with hazard switch	●	●	●
Work lights			
4 front, 2 rear on cab and 2 rear LED working lights	●	●	●
4 front, 2 rear on cab and 2 rear LED working lights (High brightness)	○	○	○

POWER TRAIN	ZW 140-7	ZW 160-7	ZW 160PL-7
Approach speed control	●	●	●
Deceleration select switch	●	●	●
Differential			
LSD (Limited slip differential, front and rear)	○	○	○
TPD (Torque proportioning differential, front and rear)	●	●	●
Electrically controlled HST system	●	●	●
Forward/Reverse lever	●	●	●
Forward/Reverse selector switch	●	●	●
Power mode switch	●	●	●
Traction control switch	●	●	●
1st speed limited switch	●	●	●

TIRES	ZW 140-7	ZW 160-7	ZW 160PL-7
20.5R25 (L3) VJTZ	●	●	●
20.5R25 (L3) XHA2	○	○	○

MISCELLANEOUS	ZW 140-7	ZW 160-7	ZW 160PL-7
Articulation lock bar	●	●	●
Belly guard (bolt on type) (front/rear)	●	●	●
Bucket cylinder guard	●	●	●
Cab top rail			
Front rail on the cab top	●	●	●
Rear rail on the cab top	●	●	●
Counterweight, built-in	●	●	●
Drawbar with locking pin	●	●	●
Emergency steering	●	●	●
Fenders			
for 20.5 R25 (front and full covered rear fenders with mud flaps)	●	●	●
Global e-Service	●	●	●
Lift and tie down hooks	●	●	●
Lift arm			
High lift arm	○	○	—
Parallel lift arm	—	—	●
Standard lift arm	●	●	—
On board information controller	●	●	●
Pilfer proof			
Battery cover with locking bracket	●	●	●
Lockable engine cover	●	●	●
Lockable fuel refilling cap	●	●	●
Quick coupler	—	—	●
Radiator dust protection screen	●	●	●
Standard tool kit	●	●	●

MEMO

[illegible]

MEMO

[illegible]

Prior to operating this machine, including satellite communication system, in a country other than a country of its intended use, it may be necessary to make modifications to it so that it complies with the local regulatory standards (including safety standards) and legal requirements of that particular country. Please do not export or operate this machine outside the country of its intended use until such compliance has been confirmed. Please contact your Hitachi dealer in case of questions about compliance.

CablePrice Pty Ltd
www.cableprice.co.nz
Hitachi Construction Machinery Australia
www.hitachicm.com.au

These specifications are subject to change without notice.
Illustrations and photos show the standard models, and may or may not include optional equipment, accessories, and all standard equipment with some differences in color and features. Before use, read and understand the Operator's Manual for proper operation.

KL-EN196AU00.00 (---/--- ---)